

Giggleswick Mill

BY DI FORD-HALL



Broderie Perse Quilt
designed by: **Di Ford-Hall**

Quilt Size: **82" x 82"**

andoverfabrics.com



About Giggleswick Mill

My love of Old English Frame Quilts inspired this quilt. The Broderie Perse urn of flowers and scrappy squares on point make up the body of the quilt. The large floral print borders, typical in antique English quilts, give a soft look to the edges, ensuring your quilt will look like it was made 150 years ago. — *Di Ford-Hall*

andover



makower uk
The Henley Studio

Free Pattern Download Available

1384 Broadway New York, NY 10018
Tel. (800) 223-5678 • andoverfabrics.com

Giggleswick Mill

BY DI FORD-HALL



8217-N*



8217-R



8217-T



8219-L



8218-NL



8218-RL*



8218-TL



8219-LN



8220-G



8220-N



8220-R*



8220-T*



8223-E*



8224-E*



8221-N*



8221-R*



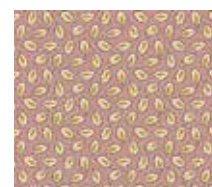
8221-T



8221-Y



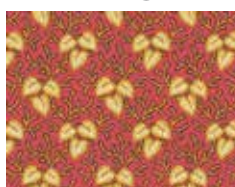
8223-R*



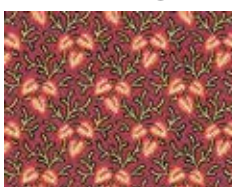
8224-N*



8222-N*



8222-O



8222-R*



8222-T*



8223-T*



8224-T*

FABRIC	5 KITS	10 KITS	20 KITS	
8217-N	1	2	3	
8218-RL	2	4	7	
8152-G	1	1	2	
FROM EACH	1	1	1	
8220-N	8220-R	8220-T	8221-N	8221-R
8222-N	8222-R	8222-T	8223-E	8223-R
8223-T	8224-E	8224-N	8224-T	8158-T
8144-N	8158-E	8159-P	8155-P	
BACKING				
8219-LN	3	5	10	

Yardage needed for backing: 7½ YDS per kit

Bolts needed to cut project kits. 15 yds = 1 bolt

Fabrics shown are 30% of actual size.

Fabrics used in quilt pattern are shown in black.

Blend with fabrics from **Trinkets** by Kathy Hall



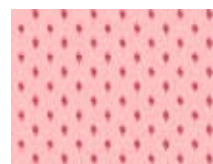
8158-T*



8152-G*



8144-N*



8158-E*



8159-P*



8155-P*

andover

makower uk
The Hanley Studio